



robinson **house** studio
furniture school

introduction	3
the studio	5
the team	6
the workshop	8
courses	11
taster week	12
weekend courses	14
long courses	18
course benefits	22
students	25
faq	26
testimonials	29
student gallery	30
contact us	32



why choose robinson house studio?

‘robinson house studio’ was started by Marc Fish, after launching a career in furniture making in 1996 and seeing a need for high quality tuition. During his career, Marc has won four Guild Marks and continues to work on his fine furniture pieces. Theo Cook is now a partner in the school, with over 20 years of experience and two Guild Marks under his belt.

Our mission here at ‘robinson house studio’ is to teach you to really hone your craft and your skills, with a focus on design, so you can make original, creative, and high quality pieces. Students are encouraged to mix media, push boundaries, and try new things. Having an active fine furniture maker as a school principal means we are always aware of current trends, modern designs, and new advances in the industry.

We want to help to get you to a point where you can start your own business, or help you put together a portfolio if you’re looking for employment within the industry, as well as provide passionate hobbyists with the next step in their craft with professional knowledge and practical experience.

We have small intakes of up to five students at a time, which allows for plenty of one-to-one tutoring time, and leaves us the room to really help you develop your skills in the areas you are most interested in. We also have a variety of guest lectures and trips throughout the year.

the robinson house studio diploma

We are aware of the pressure from potential employers for a qualification before employment. With this in mind, combined with a goal of students’ personal development, we have our own grading system for students on our one year course. It doesn’t interfere with the day to day course and runs in the background, but is something to strive for and a mark of achievement.

Students are graded on attendance, craftsmanship, design understanding, contribution to discussions, machining, aptitude, application, attitude, health and safety, and your projects.



the studio

the team



marc fish

School founder and principal

Marc has been awarded four Guild Marks by The Worshipful Company of Furniture Makers. He currently sells his pieces almost exclusively to a New York gallery.



theo cook

Senior tutor

Theo trained at Edward Barnsley Workshop and has won two Guild Marks. He does much of the day-to-day teaching and is on hand to help students with their projects.



chris funnell

Senior craftsman

Chris was previously a student here, and has been awarded both a Certificate of Merit and a Guild Mark.



laurent peacock

Maker

Laurent completed a course with us in 2016 and won a Guild Mark for his second student piece.



fabio guselli

Maker

Fabio is a recent graduate of robinson house studio, and now works on Marc's commissions.



mark anstee

Mark Anstee is an artist specializing in drawing. From observational silverpoint studies to large-scale installation and site-specific drawings, Anstee has been commissioned by major museums and organisations in the UK and Europe. His work is held in many private collections in the UK and internationally. He teaches our long term students drawing for furniture design.



derek jones

Derek Jones has been the editor of the UK's premier woodworking magazine, Furniture & Cabinetmaking Magazine, since 2008, and is the author of multiple books on woodworking techniques. He runs a range of project-based courses at 'robinson house studio', making items including a Japanese style toolbox and a 6 board chest. He also often runs a course on French polishing.



charlie whinney

Charlie Whinney is one of the UK's leading experts in steam bending. He has studied architecture, furniture design, and 3D design, and now runs a creative studio that creates works for hotels, restaurants, and private clients. He comes in usually once a year to teach our students an intensive one day steam bending course, which is often also opened up to the public.

vanessa eley web designer

Vanessa is a web designer, and runs dotSquared, a web design & management company.

brenda fish accounts manager

Brenda Fish takes care of robinson house studio's accounts and handles the financial administration.

harriet massing marketing manager

Harriet works on getting our message of high quality teaching in design and making to potential students.

the workshop

We have a bench room as well as a workshop, and students learn hand skills in the bench room before graduating to the workshop



the bench room

Students start out here, with their own bench, storage space, and tool wall.

Here, students will practice their techniques and hand skills, and move into the bigger workshop after around four months.

Lessons are also taught here, and this is where the weekend courses take place.





the workshop

The workshop has around 10 benches available for students at any time, with some rented out to local makers. Marc's makers also work in here on his projects, so students get to work alongside professional makers working on commissions and commercial work.

As well as the standard machinery for a woodworking workshop, we have a range of machines that enable students to try out new techniques. We have a laser cutter, a membrane press, a 3D printer, as well as facilities for metalworking.

Each student has their own bench in the workshop, with easy access to machines.





courses

taster week



This one week taster course is designed to give you an all-round introduction to furniture. You might be interested in taking one of our longer courses, or you might be interested in starting woodworking as a hobby and want some instruction to get you started. If you do go on to book a longer course with us, the cost of this taster course will be refunded against the fee.

You'll be guided all the way through the week, gaining skills and confidence through plenty of hands-on, practical work. We cover a range of techniques, from the basics through to some more advanced methods. All of the tools are provided for you for the week, and you'll produce a beautiful, solid wood tray to take home with you.

Monday

The first day is dedicated to sharpening, one of the most fundamentally important skills of woodwork. By the end of the day you'll have chisels and hand plane blades sharp enough to take the hairs off the back of your hand!

Tuesday

We'll look at the three main hand skills: how to properly set up a hand plane, how to use a hand saw to cut perfectly to a line, and to use a chisel to create perfectly square joints.

“It has been one of the most incredible experiences of my life. Marc constructed a programme of activities perfectly suited to my abilities and needs. All in all I cannot put into words how special this week has been and how useful and inspiring it has been to me in my future work.

- David Carter-Hitchin



Wednesday

Over the rest of the week, you will make a tray with a veneered base and curved handles. This day you'll get to grips with the router table and laminate the curved handles.

Thursday

On the fourth day we'll glue up the tray sides, cut the handles using the band saw, and shape them by using spokeshaves and rasps. We'll also look at veneering.

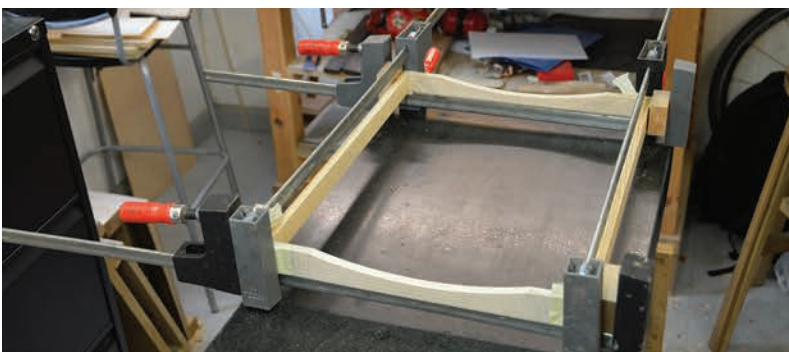
Friday

We'll spend the last day putting the finishing touches to the tray; gluing on the handles, sanding, cleaning it up, and applying a coat of oil. At this point you will have covered basic and advanced furniture making techniques, used a few machines, completed your tray and, most importantly, had a good time!

“I learned an enormous amount and enjoyed every minute of it. It was also great talking to your colleagues and one year students, and learning that they all find you as fantastically inspiring as I have! The atmosphere is very special. Among the many things that struck me were, one, how great design is the backbone of everything you do, and, two, how beginner students are expected on day one to strive for the same levels of precision that you achieve.

- *Jeremy Bradshaw*

”



Class sizes are usually 3 or 4 students, so there's plenty of one on one teaching. We accept international students, and can recommend some B&Bs nearby if you are looking for a place to stay while you take your course.

To apply, go to our website to book directly or email us if you have any enquiries.

Cost: £600

weekend courses



taster weekend

If you want to see if furniture making is for you, join us for a taster weekend. We'll cover hand tools and there will be practical sessions on planing, sawing and chiseling - the ideal starting point for cutting and fitting accurate joints. If you take a longer course with us, the cost of the taster will be refunded against the fee.

Cost: £275

“Thank you for a great weekend. It was a pleasure and a privilege to spend time in your natural habitat and I hope I can learn more from you in the future.”

- Zoe from The Institute of Making



laminating

This course is great for those looking to learn about laminating techniques and get practical experience. We'll cover formers, laminate substrates, making your own laminates, vacuum bags, the membrane press, glue lines, and multiplane laminating. This technique can really take your work to a different level. It's a very accurate method, and is an ideal way to combine more curved work with fine furniture making.

Cost: £275



carbon fibre & composites

This is an intensive, hands-on introduction to the sophisticated techniques used in the composites industry. You will make a carbon fibre tray to take home with you, as well as the mould, so you'll gain an excellent understanding of the processes required to make a carbon fibre piece, from start to finish. We will also discuss applications in furniture and ways of incorporating these materials and techniques into your own designs and projects. We'll cover techniques including resins, infusion, mould making, and gel coats.

Cost: £400



dovetailing

This is ideal for anyone who wants to know more about dovetailing – the mark of a master craftsman. A well-executed dovetail joint is the epitome of high-level craftsmanship. However, it's surprisingly easy with the right tuition. Come and learn techniques used and taught here at robinson house studio. Hand-cut through and lapped dovetails will be demonstrated in stages and students will gain practical experience.

Cost: £275



wood finishing

This course is for anyone who wants to learn more about finishing and get some practical experience. You'll learn the techniques and products used by the studio. Simple techniques can help you to finish your work to a professional standard. You'll produce samples of all the finishes in oak, walnut, cherry, maple, and sapele. We'll cover sanding, scraping, raising wood grain, wood stains, wood bleaching, UV protection, oils, waxing, brushing and ebonising.

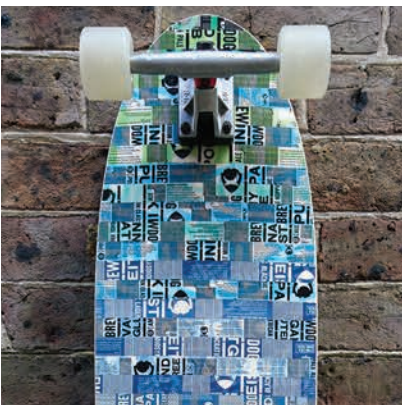
Cost: £275



make a wooden handplane

This course involves bandsawing, routing, drilling, shaping with a spokeshave, sanding and finishing. Students will be provided with a comprehensive booklet and leave with a completed plane and the skills they need to repeat the exercise on their own. This course is run by Theo Cook, who studied in the USA at James Krenov's school, the College of the Redwoods. Here he made the now famous Krenov handplanes which he now teaches here.

Cost: £275



make a wooden skateboard

Over this weekend course you'll make your own skateboard, and take home a finished deck that's ready to have trucks mounted. You'll be able to choose the size and shape of your deck (within certain limits), the colour of the deck grip, and how to decorate the base. You could laminate a fabric as part of the deck lay-up, laser etch a logo or small image, or apply stickers.

Cost: £275 + £50 for materials

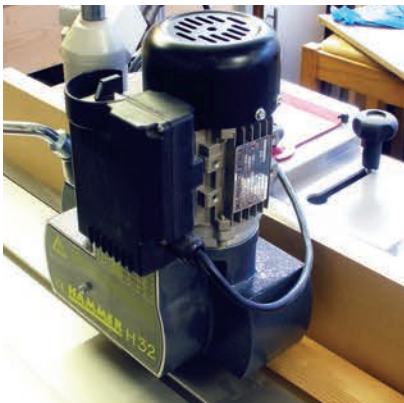
weekend courses



wood machining

This course is ideal for either a beginner or an intermediate. If you've invested in new machines and want to know how to safely use them or set them up, join us for this two day course. Learn from the professionals how to get the most from your machines! We'll cover health and safety, dust extraction, blades, sledges and tapered jigs, a bandsaw, and lots more. If there's something specific you'd like to learn about, get in touch and we can discuss it.

Cost: £275



spindle moulding

The spindle moulder is one of the most versatile machines in a workshop, but it's often feared. We'll cover safe use and setup, rebating, shaping, using formers, tenons, power feeds, jig making, and guarding. Demonstrations are combined with practical experience for students to gain confidence, knowledge, and practice. We'll also cover rebating, grooving, tenoning, using a powerfeed unit, and ring fences.

Cost: £275



wood carving

This wood carving course will be taught by Roy James Martin, who has been carving wood for over 30 years. He is a professional wood carver, working on commissions and projects including traditional furniture, modern sculptures, and everything in between. This weekend course is a great introduction to wood carving, whether you enjoy woodworking as a hobby or are a professional maker looking to add to your knowledge and skills.

Cost: £275

how to apply

We are always adding new course dates throughout the year. To view when the next course is taking place, visit our website or contact us.

If you cannot see a date for the course you are interested in, get in touch to register your interest and we'll let you know when the next one happens.

“Over a few years I had become increasingly dissatisfied with the results being obtained from various finishes tried. I am absolutely delighted as the knowledge you gave has cleared all the clouds of inability and frustration.”

- Francis Hallowses, wood finishing

courses with derek jones

Derek Jones is the editor of Furniture and Cabinetmaking magazine. He has been teaching classes here at 'robinson house studio' for many years, and it's great to have him as part of the team.

Each of Derek's classes is project based and geared towards developing a practical understanding of hand tools for independent practice in the future, which means you'll be taking home a lot more than the finished item you came to build.



french polishing

French Polish has a reputation for being difficult to master, time consuming and not nearly as robust as some other finishes. Here's the bottom line. None of the above is true. In this two day course you'll mix your own shellac polish from flakes and create your own blend of wax from raw materials. You'll learn to assess and manipulate the colour temperature of a project to disguise faults in the timber and mask repairs.

japanese style toolbox

While Japanese style joinery can be extremely complicated there are occasions when simplicity and function come together to make the perfect form. Based on a traditional Japanese carpenter's tool box, this class combines a utilitarian approach to construction with an eye for arts & crafts detail. Using just hand tools you will learn to dimension stock accurately and efficiently and incorporate some basic joinery to construct a small toolbox.

traditional 6 board chest

The six board chest is a design that is almost as old as the concept of furniture itself and is as relevant today as it has ever been. It's a design that challenges the wisdom of contemporary makers and one that may cause you to question some of your own theories about construction and assembly. On this two day course you will build a simple box suitable for sitting on with a hinged lid and internal compartment.

Cost: £275
plus materials

To find out dates of upcoming courses with Derek, please see our website.

basic syllabus

core topics

Hand tool selection – New, old, tuning and sharpening. Use of hand tools and accurate measuring

Glues – Different types, strength comparison, and correct uses.

Abrasives – Different types and correct uses

Machinery – Maintenance, identification, and applications

Health & safety

Hand power tools – Routers, router tables, biscuit jointers, domino jointers, sander, drills

Joints – Cutting, assembly, identification, construction

Cutting lists

Ordering timber – Costing and estimating waste

Timber study – Movement, moisture content, drying, defects, and conversion

External timber yard visit

Finishing – Types, applications, polishing oils, bleach, colouring

additional topics

Depending on the project you choose to design and make, you may cover some of these additional topics, depending on timing and availability

Templates, jigs

Drawing - Sketching, working drawings, rods, CAD

Veneering - Selection, storage, preparation, hand pressing

Laminating - Cutting, thicknessing, invisible glue lines

Curves - Steam bending theory, coopering, laminating

12 week design & making

The 12 week course is intended as an introduction to furniture making and covers all the basics. After the course you only need practice, determination, and imagination. This course covers everything on the basic syllabus, as outlined on page 18.

Some 12 week students have gone on to set themselves up in business - however, our longer courses are more ideally suited to this as they cover business topics. You will have your own handbook throughout the course that you can take away with you afterwards, filled with important information and useful contacts. This will also plot your progress on the course.

We teach, at every stage, the attention to detail required to make beautiful furniture, but we teach every student according to their individual needs, and since the student numbers are limited we can really pay attention to everyone's requirements.

I learned a phenomenal amount. Most significant for me was developing a far more intuitive ability to use hand tools: to feel the wood, how it reacts and how better to work it. There's a great atmosphere in the workshop. Students and teachers freely exchange information and ideas and give helpful feedback.

- Duncan White, Avocet Furniture

£6,500

20 week design & making

The 20 week course covers everything on the basic syllabus (p.18) while allowing more time to complete your projects than the 12 week course, which gives you much needed practice whilst having support and advice when it is needed. Your project will be designed by you, but you'll be supported every step of the way, with advice on proportion, aesthetics, ergonomics, material selection and functionality on hand.

This course is ideal for international students from non-EU countries. Due to strict immigration controls visitors can now only get a six month visitor's visa, which unfortunately means we usually cannot accept international students onto our year long course, so our 20 week course is ideal if you'd like to cover everything on our three month syllabus and have plenty of time to put it all into practice.

You will also be able to cover some of the more advanced subjects that are taught on our one & two year courses. You can join in with design discussions, start to consider design practices and study past and present designers. Whether you want to set up on your own, are looking for a change in career through employment, or are just enjoying a hobby, this could be just the course to fulfill your needs. Visiting lecturers attend the studio with discussions on a variety of subjects, and take field trips to other workshops and exhibitions.

£10,000

extended syllabus

core topics

Hand tool selection – New, old, tuning and sharpening. Use of hand tools and accurate measuring

Glues – Different types, strength comparison, and correct uses.

Abrasives – Different types and correct uses

Machinery – Maintenance, identification, and applications

Health & safety

Hand power tools – Routers, router tables, biscuit jointers, domino jointers, sander, drills

Joints – Cutting, assembly, identification, construction

Templates

Jigs and small batch runs

Drawing – Sketching, working drawings, rods, CAD

Cutting lists

Ordering timber – Costing and estimating waste

Timber study – Movement, moisture content, drying, defects, and conversion

External timber yard visit

Veneering – Selection, storage, preparation, hand pressing, vacuum bag

Laminating – Cutting, thicknessing, invisible glue lines

Curves – Steam bending theory, coopering, laminating

Finishing – Types, applications, polishing oils, bleach, colouring

additional topics

If time allows we also may cover other topics, such as:

Welding

Power carving

Metal turning

Steam bending – practical

50 week design & making

This one year course covers all of the basics you'll need to know, listed in the extended syllabus (p.20). Design appreciation and history will be looked at and assignments are given out which enable you to join in with our design discussions, start to consider design practices, and study existing designers. Three or four projects are usually completed and will be designed by you with guidance from your tutors. Our year course lasts a full 50 weeks, with 2 weeks off in December, so you can get as much practical experience as possible during your time here.

£17,000

50 week making only

This one year course is aimed at those who might be looking for a career as a maker in an employed role. This may appeal to those who want to concentrate just on making, maybe find the design element daunting or are just not interested in it at this stage of their learning or career. This course covers all of the topics in the extended syllabus without the focus on design.

£16,000

50 week advanced

Our advanced 50 week course is ideal for anyone who might already have some experience with woodworking or furniture making and wants to expand their knowledge. This course allows you to skip the basics that you already know and really get further in terms of design and elevating your making skills.

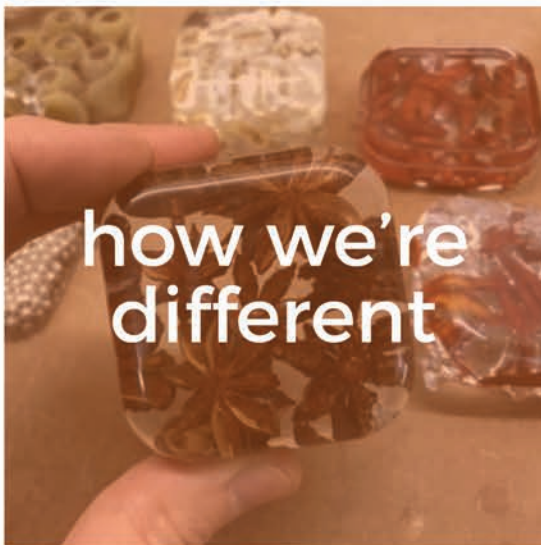
£15,000

2 year design & making

This two-year course is aimed at those who may be looking into a conventional furniture design and making degree course with one of the UK's universities. Our diploma scheme gives you a real feeling of achievement, and shows an employer your aptitude, skill and practical application abilities. At least six projects are usually completed in the two years; the projects will be designed by you with guidance from tutors. You'll cover everything on the extended syllabus (p.20), plus a range of additional topics, and you'll have plenty of time to practice and really hone your skills.

£30,000

course benefits



how we're different

Unlike many other furniture courses, ours lasts a full 50 weeks, with two weeks off in December. This means that you can really make the most of your time with us, and get in as much practice and making time as possible.

We have a focus on modern techniques, and on using many different materials. We have a strong focus on design and the studio has a reputation of experimentation and progression of mixed materials. We teach students material science in order to expand their knowledge on how to use other materials with wood.

Marc makes his work in the same studio as the students are learning and working on their own projects, which means students get the opportunity to work alongside a professional furniture designer selling high end pieces.



guest lecturers

We strive to give students the best quality and most well-rounded education we can, so we bring in various guest lecturers who have expertise in certain subjects. Charlie Whinney teaches a steam bending course, where students learn all about the ancient process of heating wood with steam in order to manipulate its form. Mark Anstee is also a guest lecturer, providing a six-part drawing course in order to help students to sketch out their designs.

Another guest lecturer is Richard Williams, who comes in to give our students a talk on running a business, sharing his experience on balancing the creative work with business management. You can read more about our guest lecturers on page 7.



exhibitions

One of the benefits of being based in Newhaven is the proximity to London, which means we are able to take students to various London exhibitions. The exhibitions we visit change each year depending on the dates and our schedule.

Some of the exhibitions we've visited with students in the past include PAD London, Design Junction, London Design Fair, Celebration of Craftsmanship & Design, Masterpiece, and Collect.



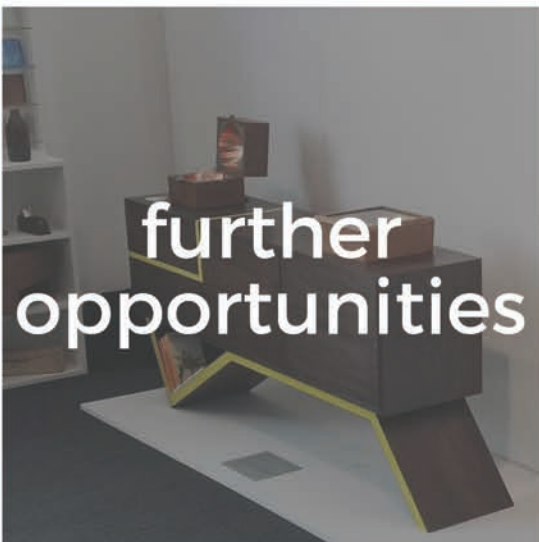
We like to take students out of the workshop from time to time, in order to visit other makers and learn new practices, as well as to teach them how to source their materials for future work. We regularly visit The Edward Barnsley Workshop so students can learn about their work and get an insight into a professional workshop. Other trips vary from year to year, but in the past we have visited Yannick Chastang, who specialises in restoration and conservation.

We also take students to visit a timber yard and veneer suppliers, in order to show them how the process works and how to source materials. The students then go on to return to the suppliers independently as they work on their projects with us.



Being close to London means we are also able to take students to museums to expand their knowledge of furniture design, both its history as well as contemporary design. In the past we have visited the V&A museum and the Tate Modern in London as they provide a wealth of inspiration for the students' own designs.

We have also visited the materials library, compiled by the Institute of Making with UCL, which has a vast collection of all kinds of materials. Outside of London, we have also visited the Arts and Crafts museum in Cheltenham, which holds a collection on the arts and crafts movement in Britain.



Many of our students have won awards, including Laurent Peacock, who won a Guild Mark for a piece he made while with us. Marc is on the judging panel for the Guild Mark award, and can provide insight into what goes into an award-winning piece.

We also regularly attend the New Designers show in London, which exhibits work from new designers and graduates. We are always looking for excellent student work to exhibit in the future.

We also have an alumni Facebook group for our graduates. We often update this group with job opportunities when we are made aware of them, in order to help ex-students to find work after they leave us.



students



the courses

When can I start my course?

For long courses (12 weeks and up), we take on new students in January, May, and September. It is sometimes possible to accommodate students starting outside these dates, however, so do get in touch if you'd like to discuss a different start date. For week-long and weekend courses, we regularly update our website with upcoming course dates.

How are the courses taught?

The courses are taught in small groups of around 5 students, so you'll get plenty of one-on-one time with the tutors. There are talks and lectures by Marc Fish and by Theo Cook, who are on hand as tutors. Students typically complete 3-4 projects over a one year course, which are designed by the students with guidance from tutors, but can be set by tutors if a student wants to solely focus on making. There are also occasional guest lectures and trips to exhibitions.

Will the course qualify me to set up my own business?

We have had students from the 12 week course set up businesses, but if this is your aim, we'd suggest the 1 year course as a better option. They are ideal if you're looking for a career change, or if you're a student looking to build a business out of your passion. If you're interested in doing this, we can cover business subjects, including accountancy, legislation, and marketing. Plenty of our students have gone on to start their own business!

What happens after I finish my course?

If you'd like to carry on with your woodworking after the course, we have benches available to hire on a part time or full time basis. You could run your business from here, or use it and our equipment until you are able to set up your own workshop. You could also gain work elsewhere, using the portfolio you will have built up during your time with us.

applying

Do I need experience to apply for one of your courses?

Not at all! Our long courses are designed to cover everything, right from the basics, and most of our students join us without experience. If you have some experience, our course may still be right for you as we offer an opportunity to expand on your knowledge and get a lot of practice in. If you have some experience and aren't sure if our course is right, please get in touch.

Do you accept international students?

Yes! However, if you are from outside the EU it can be difficult getting a VISA for longer than 6 months, so we would recommend the 20 week course so you can get the most out of your time here.

Are there any funding options available?

Unfortunately, there are not many options available for student loans or grants, and the majority of our students are self-funded. However, you could look into the Professional Career and Development Loan. Please research further through the Gov website as we cannot advise further on these loans.

Can I come and visit you?

Yes, please do! We are located in Newhaven, Brighton, which is just over an hour from London by train. Please contact us to arrange a time to come and visit us.

student life

Where is the studio?

We are located in Newhaven, which is just outside of Brighton, and just over an hour away from London by train. We are also right on the South coast, close to the sea!

Can you recommend accommodation for students?

There are plenty of places to stay in the surrounding areas, including bed & breakfasts and homes you can rent while you stay here.

Will I need a car to get to the studio?

No. The studio is a short walk from a nearby train station and there is a bus stop close by.

What can I do in my spare time?

Brighton is a busy city that's popular with tourists, with lots of events and festivals throughout the year. We're also close to the beach and surrounded by the beautiful Sussex countryside. We're close to London too, where there is plenty to see and do.



59.91	59.92	95
91		

student testimonials

“Having spent most of my working life as a draughtsman drawing fitted furniture I always knew I wanted to learn how to make furniture to the highest standard possible. I started with a taster course of one week and soon realised robinson house studio certainly teaches that and a lot more! I then enrolled on a 20 week course. Some time ago, when studying for an HND in design, a tutor told me - we are never happier than when we are being creative; as a student at rhs I was reminded just how true that is. The skills and attention to detail exhibited by Marc and his team are truly inspirational. It is these finer aspects of furniture making I am particularly grateful to have been exposed to. The tuition offers not only the highest level of furniture making lessons but invaluable advice and support in marketing, industry connections and even how to work with suppliers and choose your materials. I am delighted I took the plunge and became a student; my only regret is that I didn't do it years ago!

- Gary Adams, 20 week course



“During my time at ‘robinson house studio’ I learnt how to combine traditional making techniques with modern design. The understanding of materials and design developed during my course is something I deeply value and will draw upon throughout the rest of my working life. When I first started out in the workshop my imagination was fired by the introduction to a huge variety of designers and techniques. Through the construction of my projects I came to realise that you can make almost anything you can imagine. Studying at Robinson house studio was a wonderful experience and has been a catalyst for me to embark on a career in architecture and design.

- Dan Ryder Cook, 50 week course



“Spending a year at ‘robinson house studio’ instilled a confidence in my ability as a craftsman. I chose to come do a course instead of taking a more conventional approach to higher education like University. It helped me to develop a unique set of skills that I can take into starting a career as a maker. Their approach is unique - the basic fundamentals are covered in the first few months. What I feel set it apart was the freedom I was given once I gained these skills and where I was encouraged to take them. Students are spurred to branch out from traditional furniture and experiment with the multitude of materials available to us. I spent many weekends and late evenings at the workshop and quickly gained a passion for making that I knew I had but had never been given quite the facilities and skills to explore. The team of craftsmen are there to help along the way with decades of industry experience and always seem to be able to help solve any problem. My time at the studio has given me a steadfast base on which I can now continue to develop my own identity as a designer and a craftsman in the future.

- Adam Attewell, 50 week course



Award Winning Students

In my career I have won four Guild Marks and I am on the Guild Mark Committee, so I know exactly what it takes to win awards for design and making and this quality is deeply routed in everything we teach.

- Marc Fish, school principal



Chris Funnell's acrylic & wenge cabinet

*Awarded a certificate of Merit by the
Worshipful Company of Furniture
Makers, 2010*



*Laurent Peacock's Sika Console Table
Awarded a Guild Mark, 2017*



Gary Adams' dressing table in rippled sycamore

*Awarded a certificate of Merit by the Worshipful
Company of Furniture Makers, 2015*



Adam Attewell's low table in sycamore and bronze



Chris Coane's desk in ebonised oak, copper, and leather



Dan Ryder Cook's clock in walnut



Roi Klifi's black MDF drinks cabinet

contact us



Address:

robinson house studio
Robinson Road
Newhaven
East Sussex
BN9 9BL
England

Phone:

01273 513611

Email:

info@marcfish.co.uk

Website:

www.robinsonhousestudio.co.uk

Airports: 45 minutes from London Gatwick, 90 minutes from Heathrow
Ferry: 5 minutes walking distance to Newhaven Port
Channel Tunnel: 60 minutes from Ashford International station
Train Station: 5 minutes walking distance to Newhaven Town station
Bus Stop: 5 minutes walking distance to the bus stop for Brighton
Roads: 10 minutes to A27, 20 minutes to M23, 20 minutes to Brighton

We are located in Newhaven, just outside of Brighton and a little over an hour away from London, which means there's plenty for students to do outside of school hours and we're ideally placed to visit exhibitions and museums.

